

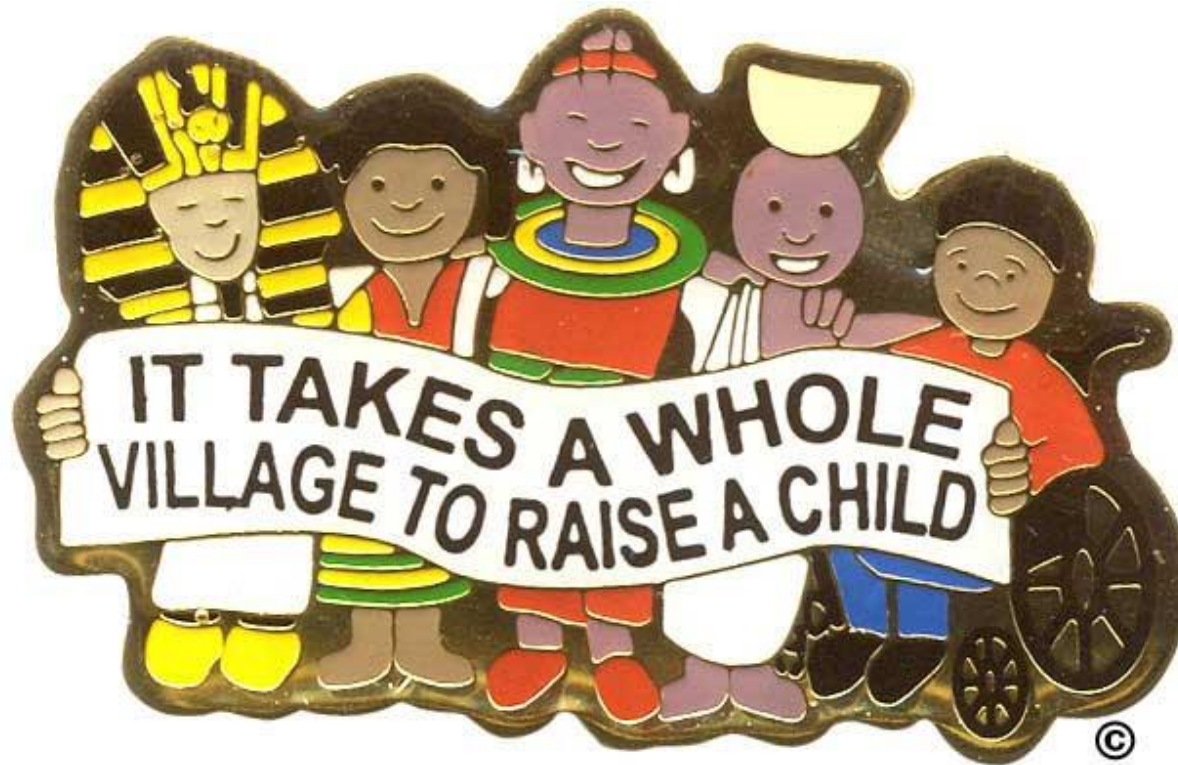
Upper Secondary Subject Combination Briefing

3 March 2023



Respect . **I**ntegrity . **S**elf-discipline . **E**mpathy

Parents, our Partners



Parents, our Partners – Developing the Growth Mindset

- Two-year journey of preparation and examination
- Deepening the learning for **English Language & Mathematics**
- Establishing strong foundation for new subjects.
- Increased breadth and depth of subjects (e.g. coursework; Combined Hum; A Math; Full Sci)

It's a Marathon and not a 100m dash



Respect . Integrity . Self-discipline . Empathy

Parents, our Partners – Nurturing Habits

Practice isn't the thing you do once you're good. It's the **thing you do that makes you good.**

10,000 hours is an enormous amount of time. It's all but impossible to reach that number all by yourself ... you need **support** and some kind of extraordinary **opportunity** that gives you the **chance to put in those hours.**

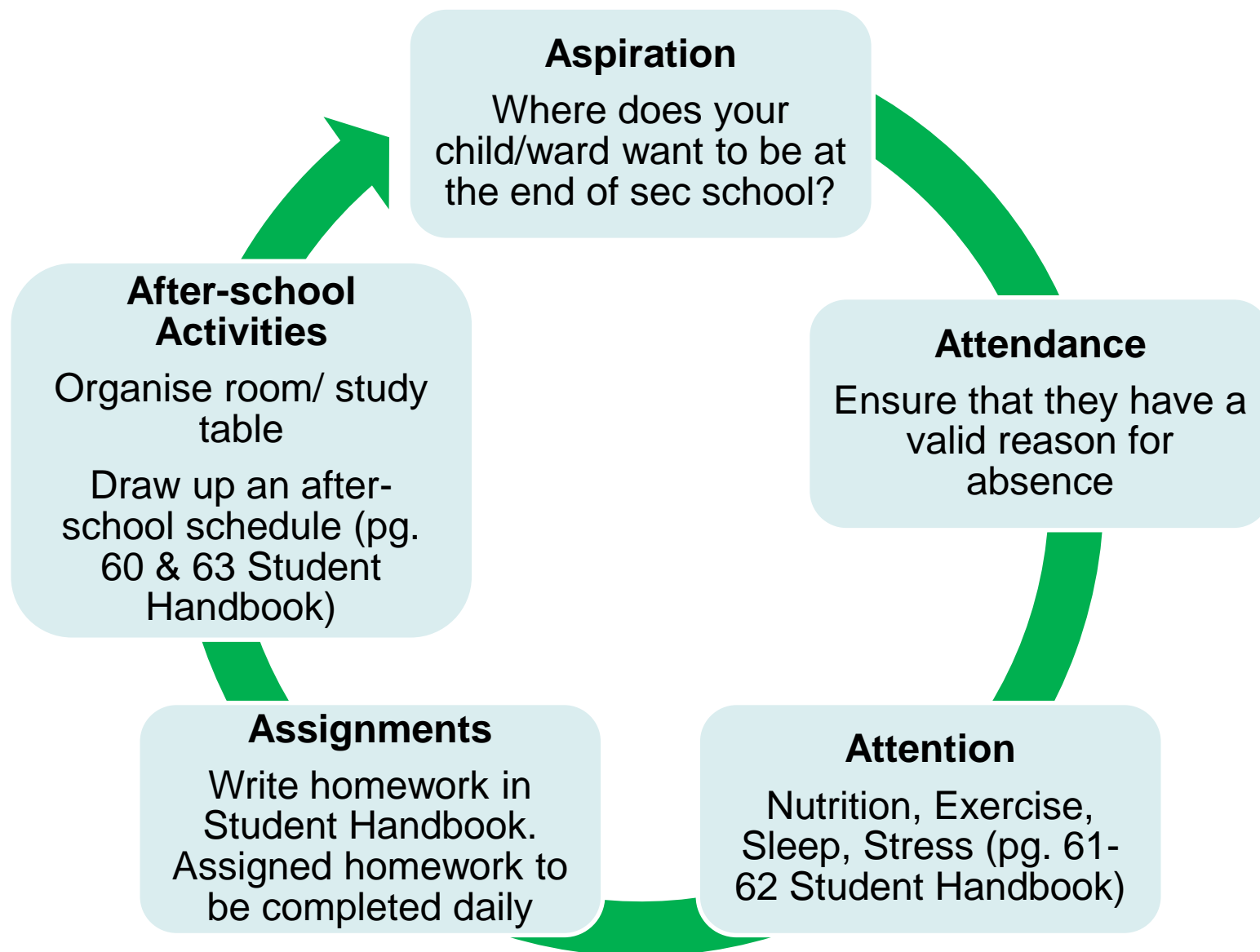
Malcolm Gladwell, author of Outlier

Make your habit, then your habit will make you



Respect . Integrity . Self-discipline . Empathy

Parents, our Partners – Reinforcing the 5As



Assessments & Promotion

Non-Coursework Subjects (pg. 45 Student Handbook)

Subjects (e.g. EL, MT, Math, Sci, Hum, CPA)	Term 1	Term 2	Term 3	Term 4
	WA1 (%)	WA2 (%)	WA3 (%)	YE Exam (%)
	15	15	15	55

Coursework Subjects (pg. 45 Student Handbook)

Subject	Term 1	Term 2	Term 3	Term 4
	WA1 (%)	WA2 (%)	WA3 (%)	WA4 (%)
Art	25	25	25	25
D&T (Sem 1)	60	40		
FCE (Sem 2)			60	40

**Results for
the Semester
will be results
for the whole
year.**



No MY Exam



Respect . Integrity . Self-discipline . Empathy

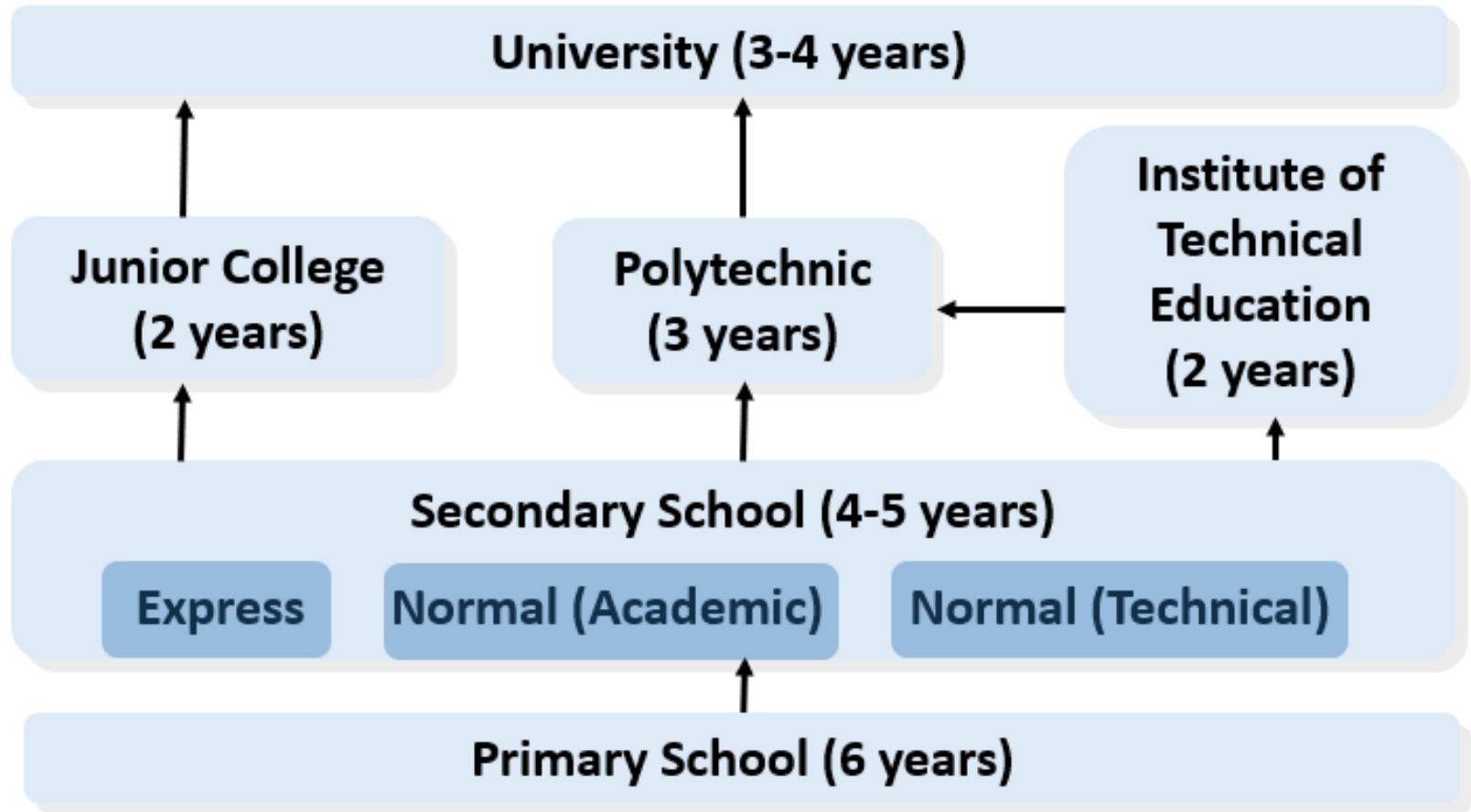
Assessments & Promotion

	Criteria for Promotion (pg. 40-42 Student Handbook)
2E	<ul style="list-style-type: none">• Pass EL AND Overall 50%
2N(A)	<ul style="list-style-type: none">• Grade 5 or better in EL and TWO other subjects, OR• Grade 5 or better in FOUR subjects
2N(T)	<ul style="list-style-type: none">• Grade D or better in Maths or EL, AND• Pass in ONE other subject

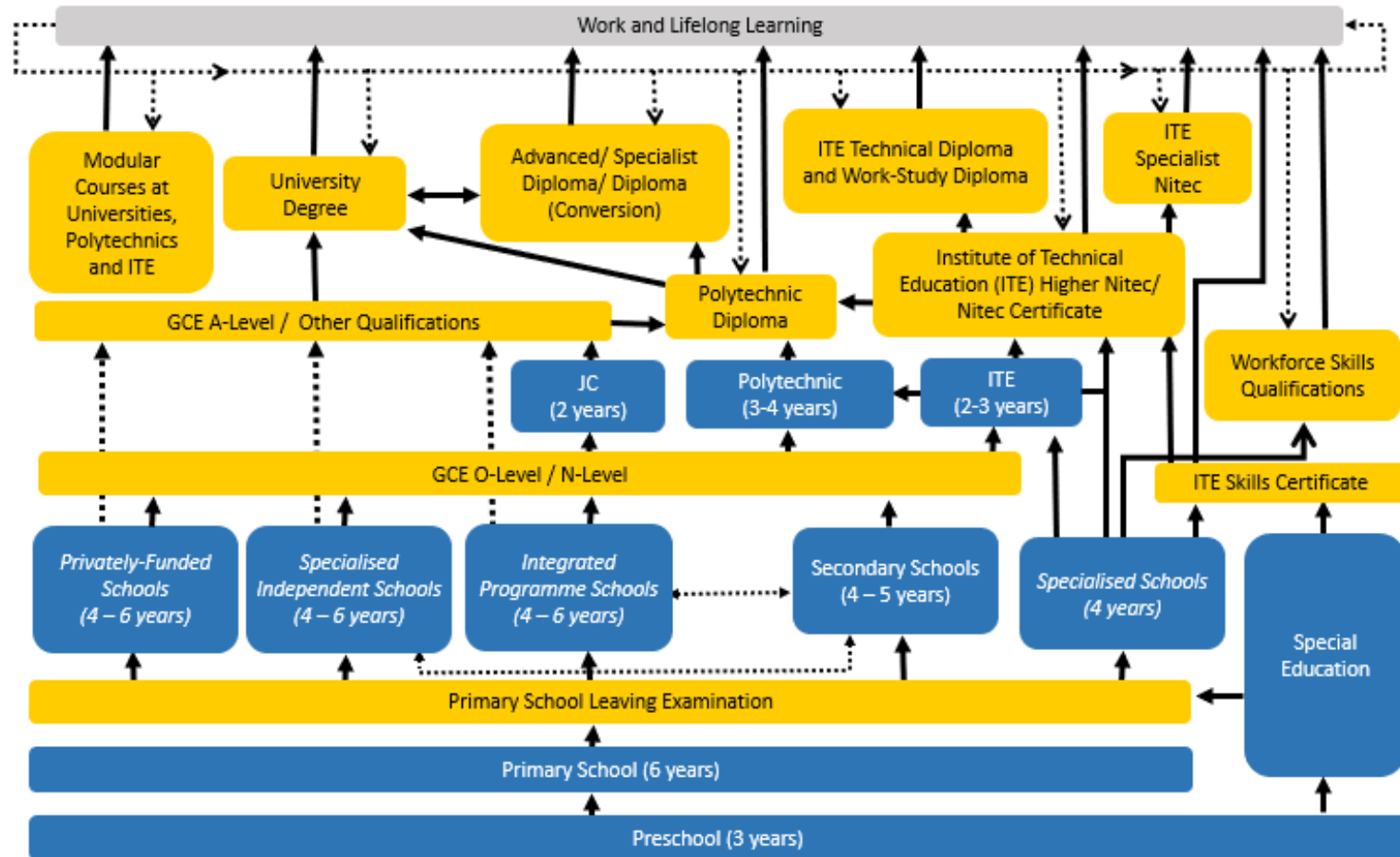
Refer to pg. 35-36 Student Handbook for eligibility criteria to post-secondary options



Educational Pathways in the Past



Educational Pathways Today with More Diverse Pathways and Opportunities



Communication Channels

- Letter to parents (hardcopy and on School Website)
- <http://www.bukitmerahsec.moe.edu.sg>
- Student Handbook
- Annual School Magazine

Contact Us via

- Office phone: 6474 8934
- Generic email: bmss@moe.edu.sg
- Email addresses of all staff can be found on the school website



BUKIT MERAH
SECONDARY SCHOOL

ABOUT US ▾

OUR MERAHAN CURRICULUM ▾

OUR MERAHAN CO-CURRICULUM ▾

LINKS ▾

PARTNERSHIP ▾



Principal's Message

Our School Crest and Song

Our School Heritage

Our School Code of Conduct

Our People

Our Achievements

Our Publications

Contact Us

Every Merahan
A Resilient, Caring and
Self-directed learner

<http://www.bukitmerahsec.moe.edu.sg>



Respect . Integrity . Self-discipline . Empathy


[HOME](#) / [ABOUT US](#) / [OUR PEOPLE](#) / [KEY PERSONNEL](#)

Key Personnel

 Principal's Message

 Our School Crest and Song ▾

 Our School Heritage ▾



School Code of

School Management

School Leaders	Designation	Email Address
Mr Darren Chong	Principal	darren_chong@schools.gov.sg
Mr Clifton Koh	Vice-Principal	KOH_Siew_Boon@schools.gov.sg
Ms Sharon Yap	Vice-Principal	yap_sharon@schools.gov.sg
Dr Leong Swee Ling	Master Teacher	leong_swee_ling@schools.gov.sg

Email addresses of staff



Respect . **I**ntegrity . **S**elf-discipline . **E**mpathy

SCAN TO FOLLOW US
ON SOCIAL MEDIA



Website

<https://www.bukitmerahsec.moe.edu.sg/>

Facebook

Bukit Merah Secondary School



Instagram

@bmssofficial_



Respect . **I**ntegrity . **S**elf-discipline . **E**mpathy

Thank You



Respect . Integrity . Self-discipline . Empathy